



## Contents

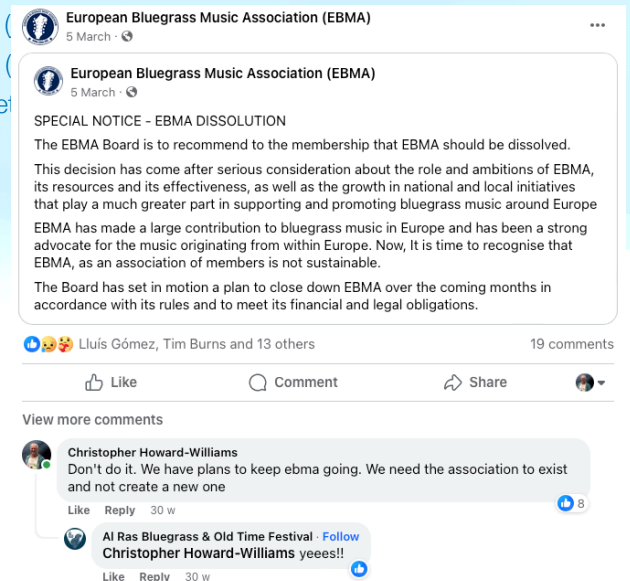
1. Timeline to Here
2. The Rationale
3. New Direction for EBMA
4. Legislation & Governance
5. EBMA Organisation Structure & Interim Board
6. Board Election Process
7. The Next 90 Days
8. Medium to Long Term
9. Q&A and Voting





## Timeline to Here

25/05/21 : CHW to EO'B : proposal to discuss IBMA actions with EBMA ( )  
 15/02/22 : KOBE becomes an EBMA action & EO'B joins committee ( )  
 21/03/22 : CHW presents European festival network to EO'B (1st meet )  
 23/05/22 : EBMA appeal for help on fb and to membership  
 31/05/22 : CHW to EO'B : "I can help with festivals"  
 04-6/08/22 : 1st KOBE at La Roche, France. EBMA funds teachers  
 7/11/22 : EO'B joins IBMA International Committee (as EBMA chair)  
 24/01/23 : 1st European "Meet & Greet" bookers & agents zoom call  
 05/03/23 : EBMA dissolution announcement on fb  
*Announcement reported in BG Today and BG Unlimited*  
*Concern and discussion at "Leadership Bluegrass" March 6-8, 2023*  
 23/03/23 : CHW & GDG meet with EBMA Board with proposal  
 28/03/23 : NS joins the team  
 05/04/23 : AT joins the team  
 24/05/23 : Written proposal sent to EBMA



## The Rationale

### Bluegrass in Europe Today

- Involvement of more and younger people
- Emergence of new, young, talented bands
- Established festivals spreading across borders and new festivals emerging
- Increase in number of local jams
- Zoom based networks
- Kids on Bluegrass Europe
- Booking agents actively booking European bands

*The right time for a pan-European organisation to federate activities and players*



# Proposed Position for EBMA

## Working with the Grassroots

Most of this is happening without EBMA involvement and could continue to do so, but there is sense in having a “holding organisation” for pan-European activities.

While EBMA cannot and should not be a copy of IBMA (few professional members), it can replicate some ideas, create links, build partnerships, facilitate communications and provide some structural support to actions in the field.

This requires an organisation that is connected with the community and that fosters and federates rather than drives and directs



## Legislation & Governance

### Finance

None of these activities require large amounts of cash. A new board will need to define a programme structure with funding plan and identify sources of income (membership fees, partnerships, grants)

### Domiciliation

Feb 2022, the EU passed a resolution to create a statute for EU associations that work across European borders.

When implementation is complete this would be an ideal domiciliation for EBMA

### Proposal

Maintain Swiss domiciliation until the statute is passed into law

- *Requires Swiss board officers*

### Note

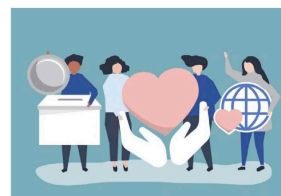
*It would be possible to dissolve and create a new association but it cannot be EU based yet and longevity is an important factor if applying for institutional funds*

STUDY  
Requested by the JURI committee



### A statute for European cross-border associations and non-profit organizations

Potential benefits in the current situation



Policy Department for Citizens' Rights and Constitutional Affairs  
Directorate-General for Internal Policies  
PE 693.439-May 2021

EN



# EBMA Organisation Structure

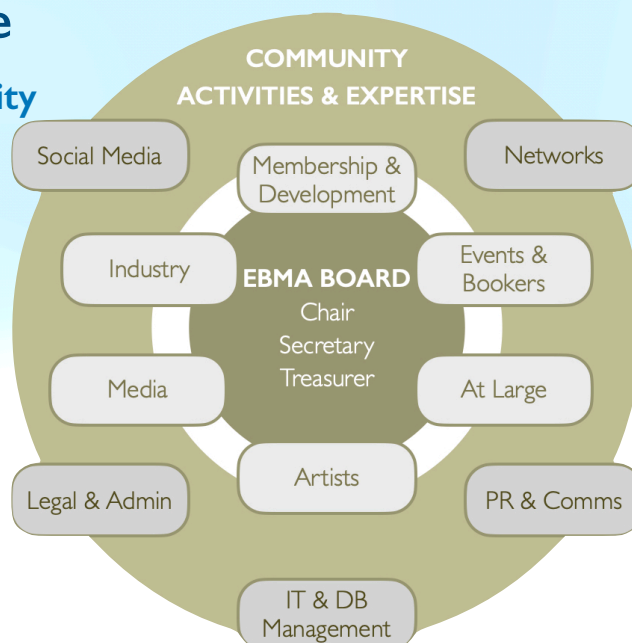
## A Board Connected With the Community

- 6 constituencies (incl. *At Large*)
- 6-12 members **representing** their constituencies
  - *Min1 or max 2 for each constituency*

Board members will work for their constituency by shaping direction, networking and organising support to enable the community to act

Any member may offer or be invited to contribute expertise without necessarily being on the board

No longer dependent on the board to do everything



## Interim Board (90 Days)

### Oversee Transition to New Board

- [Piero Biasi](#) (CHE)  
Current board, musician, festival organiser, jam leader  
Electronics tech & Business Process Engineer
- [Guido de Groot](#) (NDL)  
Founder & leader Rotterdam BG Festival  
Music related social projects and events
- [Christopher Howard-Williams](#) (GBR/FRA)  
Musician, festival organiser, IBMA Board  
International management & comms consultant
- [Nadia Sardjoe](#) (NDL/FRA)  
Singer song-writer  
PR and Law
- [Angelika Torrie](#) (CHE)  
Musician and tour organiser. Founder EBMA  
Marketing, accounting and fundraising



# Board Election Next Steps

## If This Proposal Is Approved

1. EBMA website open for new members  
(membership remains free to January 31)  
Emails to [board@ebma.org](mailto:board@ebma.org) go to interim board
2. Applications to serve via website “*EBMA Service Application*” to be submitted within 30 days of the vote
3. Interim board convenes virtual meeting with all applicants to clarify roles and constituencies and confirm application
4. AGM with membership in January to vote in new board members
5. New EBMA board in place for February 1, 2024  
*Interim Board applies for board membership as well*

### APPLICATION TO SERVE OR JOIN THE BOARD OF EBMA November 2023

Complete and return to [board@ebma.org](mailto:board@ebma.org)

Name		
Nationality & Country of Residency if different		
Email address		
Member of EBMA	YES / NO	
I want to help the EBMA but I do not want to serve on the board	YES / NO	
I wish to serve on the board	YES / NO	
If not elected to the board I would still like to help the EBMA	YES / NO	
Board Constituency(ies) applied for (more than one possible)		Membership & Development, Artists, Media, Events & Bookers, Industry, At Large (see next page)

Involvement in Bluegrass (past & present)

Experience and expertise you have that will help EBMA

How you want to contribute to the development of EBMA

# The Next 90 Days

## What Can EBMA Do Now?

- Provide a “label” for ongoing community initiatives
- Host web information and virtual meetings
- Continue collaboration in and beyond Europe





## Medium to Long Term

### New Board Serving the Membership

- Consider, decide and implement full service offer, membership fees and partner programmes
  - *Review ongoing EBMA activities and funding programmes (hold, stop, continue, modify)*
- Hold zoom forums and panel debates for constituencies/membership
- Strengthen ties with IBMA and work towards a European Leadership Bluegrass or European IBMA conference
- Target applications for funding (EU, Bluegrass Foundation, ...)



## About the Vote

### One Single Package

We are looking for a Yes or No vote for the following single 4-point package

1. Continuing the EBMA as laid out in the manifesto and this presentation
2. Maintaining domiciliation in Switzerland until EU domiciliation becomes possible
3. Validating the interim board for 90 days
4. Approving the proposed board structure and election process as laid out in the manifesto and this presentation



# The Case for This Package

## The Right Time for a European Federating Body

- There is currently a high level of engagement
- Modern communication tools make it easier
- The “I” in IBMA is getting increasing attention
- A European body carries more weight when talking with IBMA
- EBMA has strong, world-wide brand recognition
- An Association with a long history is an asset



## Q&A and Voting

### Right Now

1. Q&A on the proposal
2. Agree to vote on the full package as a single vote?
3. Vote



# Constituencies

## Membership & Development

Maintain contact with current members and find new, creative ways to grow the community and build membership.

## Events & Bookers

Represent everyone involved in running venues, organising festivals, promoting tours, teaching camps and booking bands, and help the constituency grow and get stronger

## Artists

Represent everyone involved in performing live Bluegrass, including composers, bands, solo artists, stage, sound & light engineers, and help this constituency grow and get stronger

## Media

Represent all media platforms and personalities in written, visual & audio form, and help this constituency grow and get stronger

## Industry

Represent all aspects of the industry including instrument building, distribution and sale of instruments and accessories, recording and publishing music, and help this constituency grow and get stronger

## At large

“At large” board members serve on the board without representing a specific constituency. They bring experience, expertise and professional knowledge that can serve the community in a broad (or large) sense